



Pasamuros Roxtec SwanNeck

Pasamuros para cables y tuberías con marco ampliado para atornillado a techos.

El pasamuros Roxtec Swan Neck está diseñado para instalaciones en techos. Dispone de un marco de brida ampliado con una o dos aberturas para sellar uno o varios cables y tuberías de diferentes tamaños.



- Resistente a roedores
- Rápido y sencillo de instalar

Características del producto



IP/UL NEMA

Estructura de instalación



Metal

Tipo de montaje



Atornilladura

Calificaciones y certificados

Estanquidad

- IP 54

Dimensiones del marco

mm/kg

Las variantes de marcos que figuran a continuación son una selección limitada. Para ver la gama completa de marcos y configuraciones, visite [roxtec.com](https://www.roxtec.com).

| Título | Aperturas de marcos | Espacio útil de sellado | Dimensiones externas WxHxD | Dimensiones de abertura w x h | Peso | N.º de art. |
|--------------------------------|---------------------|-------------------------|-------------------------------|----------------------------------|------|---------------|
| SWAN NECK 6x1 GALV INCL GASKET | | | 269 x 454 x 459 | 145(+5/-0) x 245(+5/-0) | 18.4 | 5S00000002695 |
| SWAN NECK 6x2 GALV INCL GASKET | | | 399 x 454 x 459 | 280(+5/-0) x 245(+5/-0) | 25.4 | 5G00000002001 |

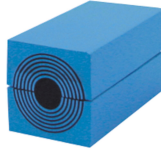


Datos de los componentes de sellado

Componentes de sellado



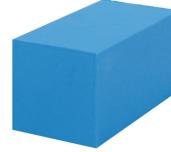
Lubricante Roxtec



Módulo RM con Multidiameter™



Wedge y Wedgekit



Módulo de compensación sólido RM



Placa de separación Roxtec



Kit de sellado Roxtec

Para obtener información detallada, visite [roxtec.com](https://www.roxtec.com).

The product information provided by Roxtec does not release the purchaser of the Roxtec system, or part thereof, from the obligation to independently determine the suitability of the products for the intended process, installation and/or use.

Roxtec gives no guarantee for the Roxtec system or any part thereof and assumes no liability for any loss or damage whatsoever, whether direct, indirect, consequential, loss of profit or otherwise, occurred or caused by the Roxtec systems or installations containing components not manufactured by an authorized manufacturer and/or occurred or caused by the use of the Roxtec system in a manner or for an application other than for which the Roxtec system was designed or intended.

Roxtec expressly excludes any implied warranties of merchantability and fitness for a particular purpose and all other express or implied representations and warranties provided by statute or common law. User determines suitability of the Roxtec system for intended use and assumes all risk and liability in connection therewith. In no event shall Roxtec be liable for indirect, consequential, punitive, special, exemplary or incidental damages or losses.

The Roxtec products are offered and sold in accordance with the conditions of the Roxtec General Terms of Sales. The latest version of the Roxtec General Terms of Sales can be downloaded from <https://www.roxtec.com/en/about-us/about-roxtec/general-terms-of-sales/>

We reserve the right to make changes to the product and technical information without further notice. Any errors in print or entry are no claims for indemnity. The content of this publication is the property of Roxtec International AB and is protected by copyright.

This document was generated on: 2024-04-26